

Galaxy Sorting Activity

Photocopy, cut and laminate enough copies for your students to work in groups.

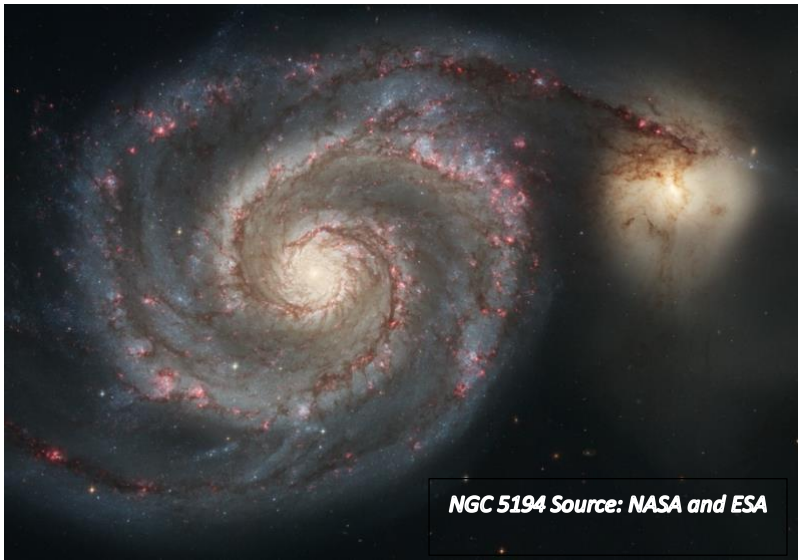
Sort the pictures of the galaxies into different classifications: **Elliptical**, **Spiral**, **Barred-Spiral** and **Irregular**. This may require some discussion in groups to pick out different features.

Discussion points:

- Why did some people have different ideas of what galaxies belonged in which group?
 - What features of galaxies are used when using the Hubble Classification Scheme?
- What might be some issues scientists might run into when using Hubble's Classification Scheme?
 - What are some other features of galaxies that scientists could use to classify galaxies?

Answers:

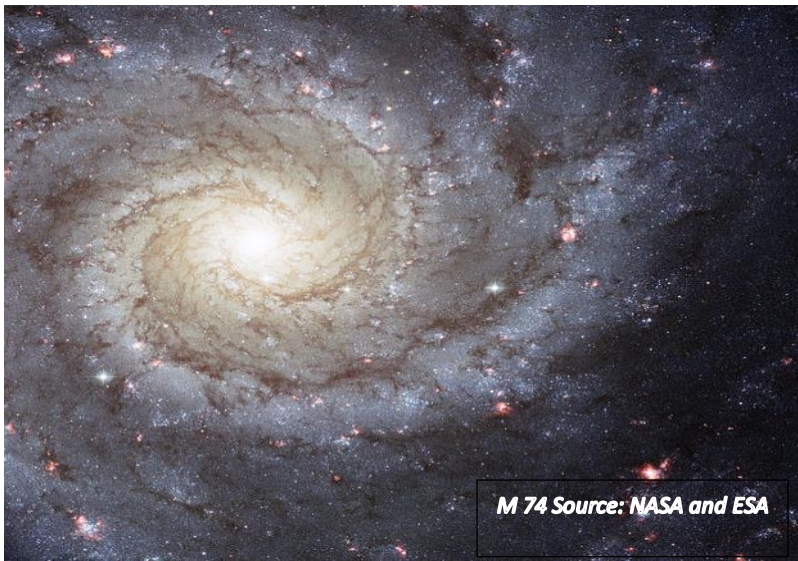
Elliptical	Spiral	Barred-Spiral	Irregular
M 87 M 110 M 89 M 105 NGC 4697	NGC 5194 M 74 NGC 1232 NGC 1566	M 91 NGC 1313 NGC 6782	NGC 5195 (sometimes classified as spiral) NGC 3109 (sometimes classified as spiral) NGC 5253



NGC 5194 Source: NASA and ESA



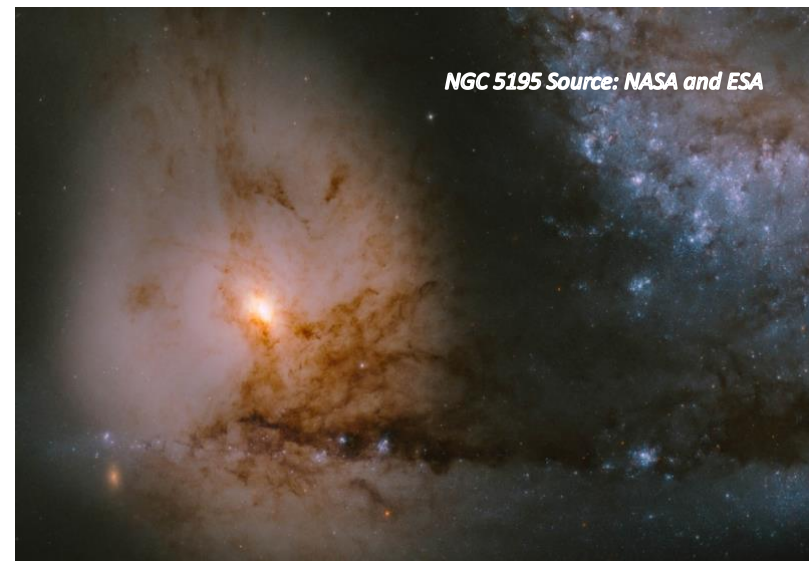
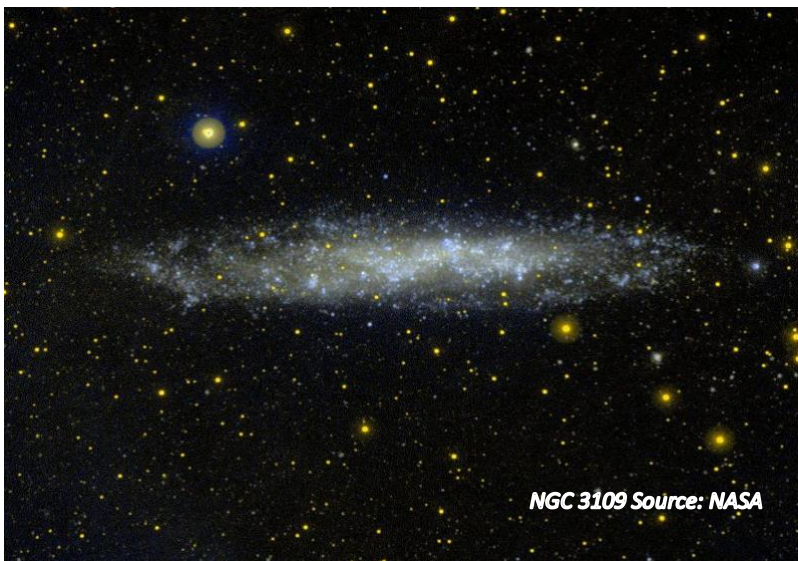
*M 91 Source: Adam Block/ Mount
Lemmon SkyCenter*

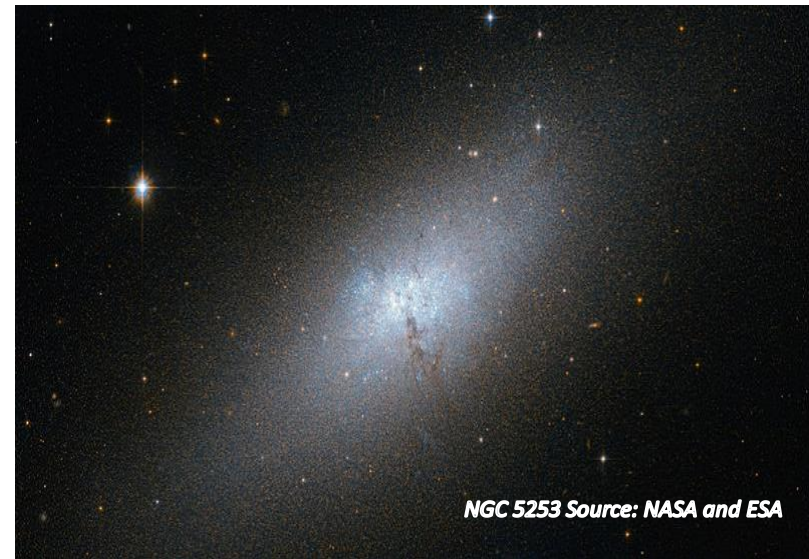
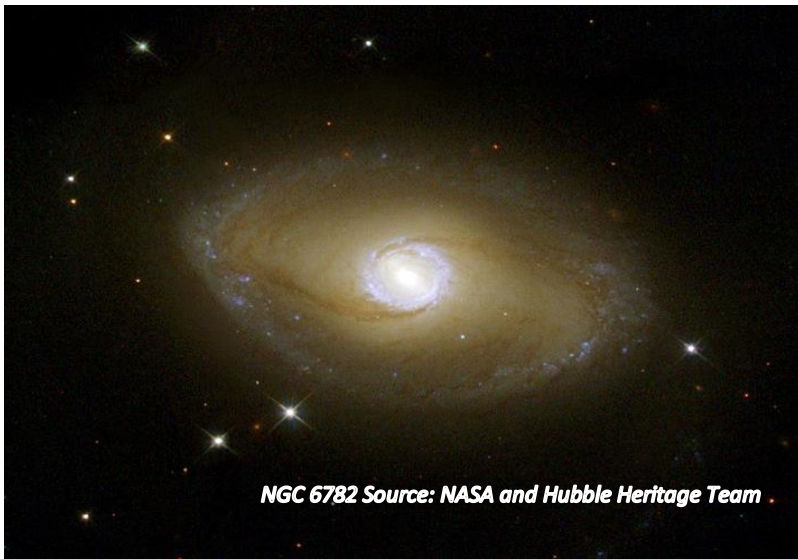
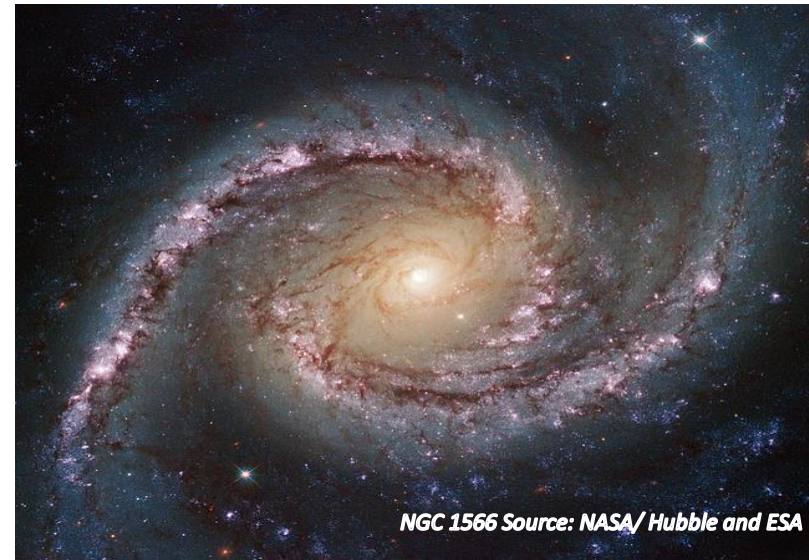


M 74 Source: NASA and ESA



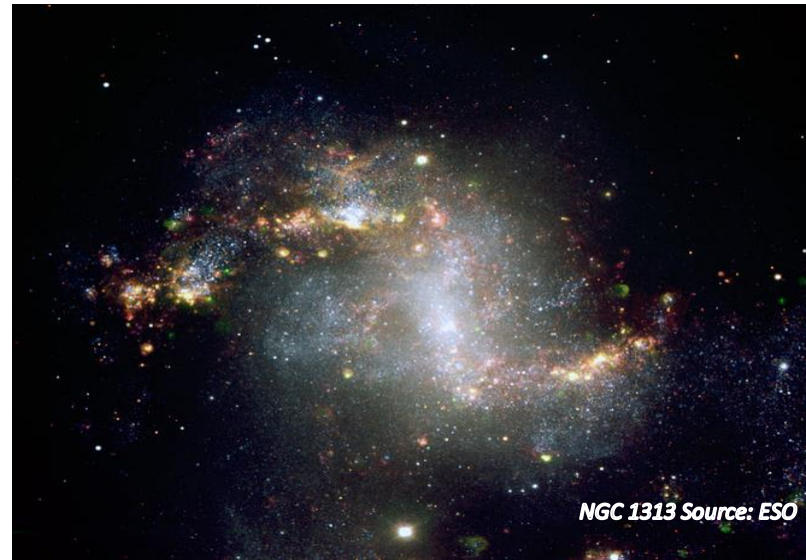
M 87 Source: Sloan Digital Sky Survey







NGC 4697 Source: Sloan Digital Sky Survey



NGC 1313 Source: ESO



NGC 1232 Source: ESO